



JULY 2026

4-H Family News

Washtenaw County



Many Hands Make Light Work at the Washtenaw County 4-H Youth Show



The Washtenaw County 4-H Youth Show could not run without the many contributions of 4-H volunteers and 4-H youth. Below are some of our sign ups for volunteers needed at the YS. Many of these roles are required for clubs to participate. Please check each sign up for requirements and volunteer expectations:

- [4-H Kitchen Sign Up](#) (Adults & Youth)
- [Buyer Buffett Volunteer Sign Up](#) (Adults & Youth)
- [Herdsmanship Judge Sign Up](#) (Adults Only)
- [Still Projects Clerks, Runners, Set Up, Take Down](#) (Adults & Youth)
- [Horse Set Up/Tear Down Sign Up](#) (Adults & Youth)

UPCOMING MEETINGS & EVENTS:

Horse Association Horse Packet Stuffing

July 7th at 7 pm at the MSU Extension Office

4-H Youth Show Superintendents Meeting

July 9th at 6:30 pm at the MSU Extension Office

Livestock & Dairy Committee

July 14th at 6 pm (New Time) at the Washtenaw Farm Council Grounds

4-H Youth Show Set Up

July 16th from 5-9 pm at the Washtenaw Farm Council Grounds

Washtenaw Farm Council Grounds Closed for Disinfecting

July 17th

Washtenaw County 4-H Youth Show Set Up

July 18th from 9 am – 2 pm (gates close at 2 pm)

Washtenaw County 4-H Youth Show

July 19th – July 24th

CONTACT US

Amy Harris

4-H Program Coordinator

harr1976@msu.edu

Jenny Speyer

4-H Program Instructor

speyerje@msu.edu

705 N. Zeeb Rd.,
P.O. Box 8645
Ann Arbor, Michigan
48107

PHONE & EMAIL:

734-997-1678

msue.washtenaw@county.msu.edu

WEBSITE:

<https://www.canr.msu.edu/washtenaw/>

Michigan State University Extension programs and materials are open to all without regard to race, color, national origin, gender, gender identity, religion, age, height, weight, disability, political beliefs, sexual orientation, marital status, family status or veteran status. Issued in furtherance of MSU Extension work, acts of May 8 and June 30, 1914, in cooperation with the U.S. Department of Agriculture. Quentin Tyler, Director, MSU Extension, East Lansing, MI 48824. This information is for educational purposes only. Reference to commercial products or trade names does not imply endorsement by MSU Extension or bias against those not mentioned.



COUNTY 4-H NEWS

We are Still Accepting 2026 Washtenaw County 4-H Youth Show Sponsorships



Help support educational opportunities for youth at the 2026 4-H Youth Show. Sponsors are needed for the many awards that will be distributed at the Youth Show. **Currently we have almost 50% of our awards sponsored! We need your help to get to 100%!** Sponsors can choose from a variety of project areas including livestock, horse, still projects, and more! Sponsor names will be given to the 4-H'er receiving the award, as well as publicized during the event and on printed materials for the program year. We also encourage 4-H'ers and 4-H families to tell local businesses and individuals about the opportunities to sponsor.

The deadline for sponsorships to be announced is July 1st, but we will always take sponsorships after this deadline. Sponsorships are assigned on a first come, first served basis.

If you want to know which awards are currently unsponsored, please call the MSU Extension Office at 734-997-1678. We can take your sponsorship over the phone but you will need to send in a check.

Save the Dates: Upcoming 4-H Youth Show Related Meetings

We want to remind our 4-H Leaders and Superintendents that we have a few upcoming meetings to prepare for the Washtenaw County 4-H Youth Show and want to remind folks of times for set up and decorations. If you are a superintendent and cannot attend any of these, please let Amy (harr1976@msu.edu) know! We will cover important information on logistics, policies, and required volunteer hours at these meetings and we do not want 4-H Clubs or Supers to miss out on this information.



- **Horse Association Horse Packet Stuffing on July 7th at 7 pm at the MSU Extension Office**
 - 4-H horse and pony exhibitors and volunteers help stuff packets for the 4-H Youth Show.
- **Youth Show Superintendents Meeting on July 9th at 6:30 pm at the MSU Extension Office**
 - Superintendents will receive their boxes and go over set up instructions for WFCG Staff, and FairEntry.
- **Livestock & Dairy Committee Meeting on July 14th at 6pm the Washtenaw Farm Council Grounds**
 - Important information for clubs and individuals showing Livestock & Dairy at the Youth Show
- **Youth Show Set Up on Thursday July 16th from 5-9 pm at the Washtenaw Farm Council Grounds**
- **Youth Show Barn Decoration and Set Up on Saturday July 18th from 9 am – 2 pm at the Washtenaw Farm Council Grounds**



COUNTY 4-H NEWS

Washtenaw 4-H Horse Association is Looking for Youth Delegates and Adult Volunteers for the State Horse Show August 13-16

The Michigan 4-H State Horse Show will be hosted on August 13-16th and Washtenaw has space for 17 delegates to attend. We have met our volunteer quotas so we are now looking for youth that would like to attend. Youth ages 12-19 (4-H age) are eligible to attend.

If you are interested, please contact Amy Harris, harr1976@msu.edu. Registration closes July 15th, so don't delay and reach out to Amy.



Traveling Trophies & Plaques Due Back to the MSU Extension Office NOW!



If you won a traveling trophy or plaque last year at the Washtenaw County 4-H Youth Show, it is now time to return these items to the MSU Extension Office. The office is open Monday-Friday 8:30 am – 3:30 pm (closed for lunch from 12-1 pm). If you need to schedule a time outside those hours, please contact us.

Trophies and plaques should be returned as soon as possible so we can assess their status and polish them up for the next recipient. These trophies mean a lot to the 4-H program, and particularly to the families who donated most of them in memory of a past 4-H participant and family member. Thank you for being a good trophy steward!

Now Accepting 2026 Washtenaw County 4-H Scholarship Applications

We are now accepting applications for the Washtenaw County 4-H Scholarship listed below. There is also a Washtenaw County Farm Bureau Scholarship for youth ages 15-19 years old. Below are the deadlines for the applications and links to the application forms. These are great opportunities for youth to apply and practice their application skills! Questions? Please contact Jenny Speyer, 4-H Program Instructor at speyerje@msu.edu

- [Washtenaw County 4-H Dairy Scholarship](#): Due July 1st
- [Washtenaw County 4-H Poultry Scholarship](#): Due July 1st
- [Washtenaw County 4-H Scholarship](#): For 2027 Seniors, Due September 4th
- [Washtenaw County Farm Bureau Outstanding Involvement in Agriculture Award for 4-H Member](#): Due August 3rd





COUNTY 4-H NEWS

Attention Horse Exhibitors and Clubs: Horse Dashboard and Volunteer Sign Up



Our Horse Youth Board has been hard at work planning for a fun and successful 4-H Youth Show. As we get closer, we'll be asking everyone to sign up to pitch in to help make the week run smoothly. Clubs will be responsible for job assignments throughout the week of fair. Plus, all Clubs and Independents are required to help with Stall Set-Up and Event Prep on Thursday, July 16th at 6pm followed by packet pickup afterward. Saturday at 9 am is stall decorating with a mandatory meeting on the Hill at 11 am. Then, teardown takes place at 8am the Saturday after the Youth Show.

Please [SIGN UP NOW](#) for items needed at Set-Up & Teardown. We especially need flatbed trailers (Set-Up and Teardown) and power washers (Teardown).

Please also bookmark this link to the [Horse Dashboard](#). Our Dashboard will have all of the information you need to know for fair, including links to Club job assignments throughout the week, volunteer sign-ups, patterns, dressage ride times, stall layouts, etc. Please check it often for updates!

4-H Kitchen Volunteers Needed

We are excited to announce that we will have a 4-H Kitchen this year Monday-Wednesday of the 4-H Youth Show. But we need your help staffing the kitchen for our 4-H Kitchen Coordinators. This year, we need clubs and 4-H volunteers to help with the 4-H Kitchen.

The 4-H Kitchen not only provides affordable food for the Washtenaw County 4-H Youth Show but also provides financial support for annual youth scholarships and county wide 4-H programs. We have roles for youth (ages 12+) and adults.

If you have a youth in your club who is younger than 12 but mature enough to help, please contact us! Parents are also welcome to bring younger kids to assist them. Youth and families can sign up here:

https://www.signupgenius.com/go/10C0D45A5AF2AA3F8C16-64417452-4hkitchen#

Reminder : Adults who sign up do need to complete the SILVER level volunteer screening. This DOES NOT require an interview, references, or trainings. They will only need to complete an application and consent to a background check. You can complete the [application here](#). If you have questions about the process, please email Jenny at speyerje@msu.edu.





COUNTY 4-H NEWS

Calling all Market Livestock & Small Animal Families!

We need your assistance with making this year's **Buyer's Buffet** a success! The Buyer's Buffet will take place on Thursday, July 23rd from 4:00-7:30 pm. **We have an updated start time to our auction this year, so the Buyers' only portion of the buffet will take place from 4:00-6:00 pm.** Starting at 6 pm the buffet will be open to everyone.

Once again this year, we will be having the meat and main side dish catered. We are asking for 4-H family assistance with providing other side dishes and dessert food donations for dinner, along with assistance with setting up, serving, and cleaning up.

Please see below for more details:

- **Volunteers to help set up and work in the Buyer's Buffet tent**
 - Here's is a link to the the sign-up sheet - [Buyer's Buffet Help](#)
 - Note - Buyers like to see the 4-Hers they are supporting helping serve the meal. With that in mind, we are looking for 4-Hers to help in addition to their family members.
- **Food Donations needed for dinner**
 - Here's is the list of items we're looking for - [Buyer's Buffet Food Sign Up Info](#)
 - Note - each market livestock family must contribute to the items contained within the attached list. If you are exhibiting in more than one market species, please donate the respective item for each species.

As our youth start to contact their buyers to invite them to the auction, a letter has been prepared which gives additional details for the auction. The letter is [linked here](#).

If anyone has questions or needs further guidance, please do not hesitate to reach out to someone on the Buyer's Buffet Committee - Valisa Bristle, Nicole Feldkamp, or Denise Prelipp.



Club & Individual Trash Cans Available Now



Does your club or 4-H'er need a trash can to decorate for the Washtenaw County 4-H Youth Show? Come pick them up at the Washtenaw Farm Council Grounds, 5055 Ann Arbor-Saline Rd, Ann Arbor, MI. Trash cans will be outside the main gate for you to pick up. Keep in mind we recycle trash cans so they will not be brand new, and you will likely have to paint over a previous design. If you want a brand-new trash can, clubs are welcome to buy one and donate it to the Washtenaw Farm Council Grounds.



COUNTY 4-H NEWS

Still Project Judges, Clerks, and Runners Needed for 4-H Youth Show



Every club with member(s) participating in Still Projects of any type (Dept 60 and higher) is **required** to provide at least one full shift clerk or runner or at least two half shift clerks or runners to assist with judging. Clerks and runners are needed Sunday, July 19th, 12:30 PM-4:30 PM in Building B (Open Pavilion). Clerk Orientation **MUST** be completed prior to this time either in person at the Youth Show or with our Still Project Superintendents before hand.

Clerks and runners can be **anyone** who meets the age requirements— 4-H members, parents, leaders, alumni, grandparents, friends, etc. However, Clerks do need to be Silver Level Volunteers. Check out the [Sign Up Form](#) for more information on the roles and age requirements. We are also looking for Still Project Judges who are flexible and have expertise in various Still Project Areas. If you know someone interested, please contact Jean Martin, jmmartin@umich.edu.

Washtenaw County Youth Rodeo Celebrating Bicentennial

Thank you to the 4-H members and 4-H volunteers, including Lily LeBlanc pictured, Dan Reeves, Kasen Alder, and Erica Drake, who helped at the Washtenaw County Youth Rodeo on June 26th at the Washtenaw Farm Council Grounds. 4-H'ers, volunteers, and staff provided interactive hands-on activities and brought llamas, goats, poultry, and a rabbit for visitors to experience.

This fun family event was free to the public and included games, food, information, and musical artist Dwayne Spaw and the Next Generation Bull Riding!

We were excited to partner with the county on this event and hope to bring more events like this to our communities.



Another Great 4-H Exploration Days with 32 Youth from Washtenaw County!



This year the Washtenaw County 4-H Exploration Days Delegation included 32 youth, 5 chaperones, and 1 staff member. 4-H Exploration Days is a MSU precollege program that welcomes youth ages 12-19 to explore their future, try new things and experience college life! During this three-day event, youth will gain confidence and independence through hands-on learning and make friends for a lifetime. Pictured to the right is our male delegation including 8 boys from Washtenaw County.

Save the date for next year's 4-H Exploration Days from June 23-25th 2027. Registration will open in March 2027. If you have questions about 4-H Exploration Days contact Jenny at speyerje@msu.edu.



COUNTY 4-H NEWS

Congrats to Three Michigan 4-H State Award Finalists from Washtenaw County

Congratulations to Washtenaw County 4-H'ers Lily LeBlanc of Saline 4-H Farmers 4-H Club, Genevieve Peale of All Around 4-H Club, and Victoria Perez of Saline 4-H Farmers 4-H Club on being finalists for the Michigan 4-H State Awards in Rabbits (Lily & Genevieve) and Goats (Victoria)! Although they did not win overall, just being a finalist is a great accomplishment!

The Michigan 4-H State Awards program recognizes outstanding 4-H members during 4-H Exploration Days. A Michigan 4-H State Award is the highest honor bestowed on Michigan 4-H members and recognizes excellence in learning, leadership and service.



All Around 4-H Club Hosts Petting Farm at St. Louis Center in Chelsea

All Around 4-H Club once again hosted a petting farm for residents of the St. Louis Center in Chelsea in late June. The St. Louis Center is a caring residential community for people with intellectual and developmental disabilities. Club members brought ducks, sheep, and rabbits for residents to interact with. We love to see our 4-H clubs engaged in service project like this that benefit their communities!



Shavings for 4-H Youth Show Available at Chelsea Lumber Bridgewater

If you are interested in ordering shavings for the 4-H Youth Show through Chelsea Lumber in Bridgewater you can call the store at 734-429-7062.

Shavings this year are \$7.49 a bag and the order cut off is Wednesday July 15th. They will be delivering them to the Washtenaw Farm Council Grounds on Friday July 17th.



COUNTY 4-H NEWS

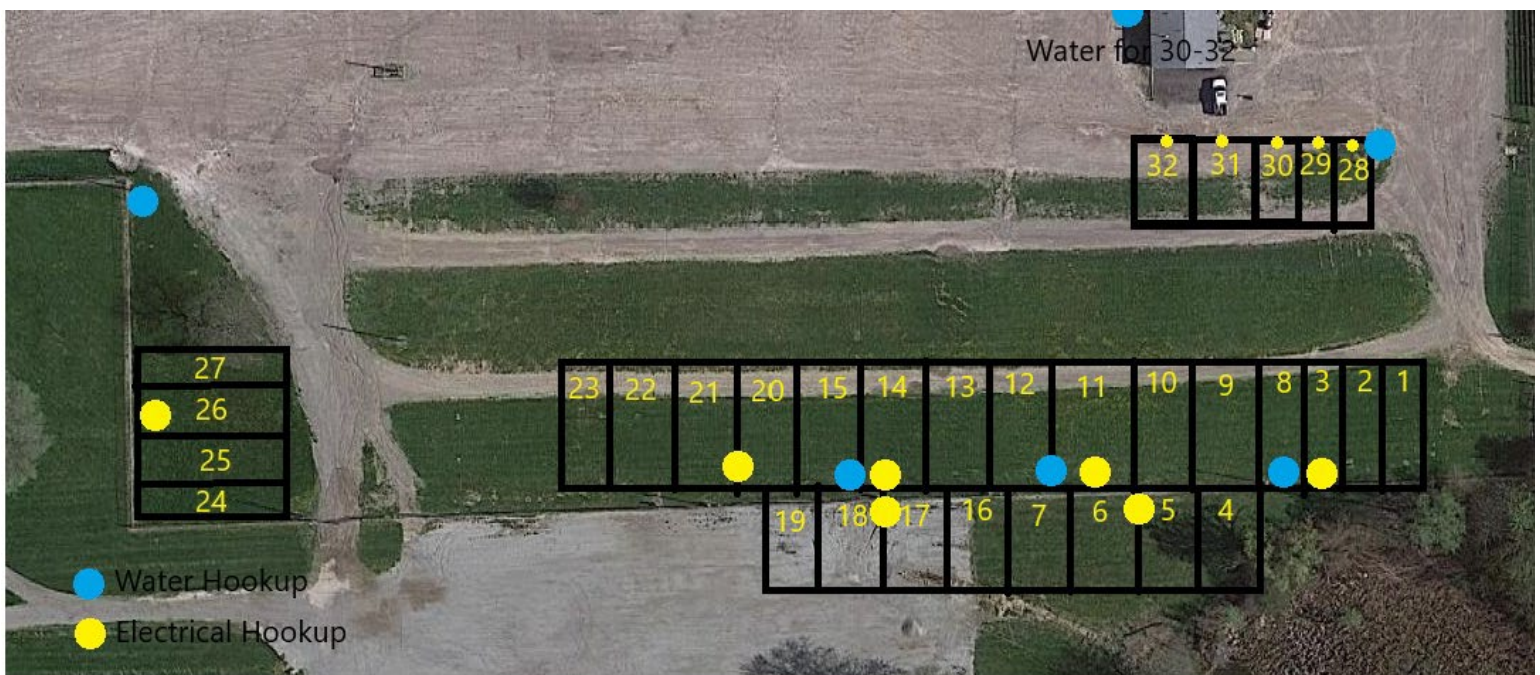
Washtenaw County 4-H Youth Show Camping Information

Camping is run by the Washtenaw Farm Council Grounds Staff so please contact them at 734-429-3145 or email them at wfc5500@gmail.com if you have questions!

4-H Youth Show Camping Rules

- Campers can start arriving on Saturday July 18th at 8 am
- Only run your essentials when you are not in your camper, this will help minimize outages (it will also keep other campers happy as they will lose power too if we exceed the limit)
- Bringing a two-way hose adapter is recommended
- Clean up all trash before leaving for the week
- If you have any issues with your campsite, please contact WFC staff only (**not 4-H Staff**). Use the phone number above to contact them.
- All children that are camping must have an adult staying with them throughout the week. If a child is found staying the night by themselves, you will be asked to remove your camper for the remainder of the week, and any future stays will be determined by WFC staff

Camping Layout (see next page for site numbers by camper)





4-H Youth Show Camping

Color	Section Color	Gate No.	Electric Hookup	Site No.	Name
		Main Gate	30 amp	1	Caro Uhleman Short
		Main Gate	30 amp	2	Julie Burger
		Main Gate	30 amp	3	Angela Eddins
		3	30 amp	4	Rich Schmaus
		3	30 amp	5	Jeff Lorch
		3	30 amp	6	Courtney White
		3	30 amp	7	Amanda Trudeau
		3	30 amp	8	Samantha R Ruhlig
		3	30 amp	9	Jen Ashman
		3	30 amp	10	Jody Feldkamp
		3	30 amp	11	Melissa Osborne
		3	50 amp	12	Olivia Atkins
		Main Gate	30 amp	13	Anthony Grando
		Main Gate	30 amp	14	Megan Skeans
		Main Gate	30 amp	15	Emily Rogers
		3	30 amp	16	Erin Perez
		3	30 amp	17	Mike Dauw
		3	30 amp	18	Kelly Messing
		3	30 amp	19	Joanna Jamil
		Main Gate	50 amp	20	Melissa Henes
		Main Gate	30 amp	21	Tammy Broesamle
		Main Gate	30 amp	22	Carrie Trinkle
		Main Gate	30 amp	23	Dana Heusel
		3	30 amp	24	Jeff Weidmeyer
		3	30 amp	25	Mandy Rogers
		3	30 amp	26	Liane Kurowicki
		3	30 amp	27	Nick Zometsky
		Main Gate	50 amp	28	Bill McCullough
		Main Gate	50 amp	29	Jason Fletcher
		Main Gate	50 amp	30	Natalie Rentschler
		Main Gate	50 amp	31	Noel Pope
		Main Gate	50 amp	32	Connie Maynard



July 2026



Sun	Mon	Tues	Weds	Thur	Fri	Sat
			1 6:30 pm - 4-H Ambassadors Meeting	2	3 Extension office closed	4
5	6	7 7pm - Horse Packet Stuffing Meeting	8 6:30 pm - 4-H Ambassadors Meeting	9 6:30 pm - 4-H Youth Show Superintend net Meeting	10	11
12	13	14 6pm - Livestock & Dairy Committee Meeting at WFCG	15	16 5-9pm -4-H Youth Show Set Up at WFCG	17 WFCG Closed for Disinfecting	18 9am - 2pm - Decorations for all Buildings/ Barns
19	20	21	22	23 AUCTION! 	24	25 8am - Clean Up Starts
 4-H Youth Show Week!						
26 	27	28	29	30	31	

All Meetings are at the MSU Extension Office unless otherwise indicated

WFCG: Washtenaw Farm Council Grounds



STATEWIDE CALENDAR OF EVENTS

Preparing youth to be Beyond Ready through the fair experience



Beyond Ready

The fair experience is more than a showcase; it's a powerful opportunity to prepare youth to be Beyond Ready for life. Through exhibiting their projects, interacting with judges and engaging with the public, young people practice real-world skills such as communication, responsibility, problem-solving and professionalism.

When volunteers create intentional learning moments, like encouraging youth to reflect on project growth, prepare for interviews or take leadership roles in their clubs, youth deepen their understanding and strengthen skills that extend far beyond the fairgrounds. Every fair interaction becomes a stepping stone toward future readiness.

Is your club helping youth make those connections and see how fair experiences prepare them for what comes next?

#BeyondReady

July 13-15: Michigan 4-H Dairy Days

Farm Bureau Pavilion, Lansing

Join 4-H members from around Michigan July 13-15 at the Farm Bureau Pavilion for Michigan 4-H Youth Dairy Days! Dairy Days is part of Michigan Dairy Expo, a celebration of dairy farmers and dairy cattle in the Great Lakes State.

www.canr.msu.edu/events/2026-michigan-4-h-youth-dairy-days

July 16: Water Day

Michigan 4-H Children's Gardens, East Lansing

Come cool off from the summer heat and have fun in the garden with water. Play water games, do water art and explore all things fun about water. Come ready to get wet!

www.canr.msu.edu/events/water-day

July 20-21: Saginaw Bay Fish Camp

Haithco Park, Saginaw

This two-day camp will teach youth to fish and protect our Great Lakes. All campers receive a fishing rod with a reel, tackle box, t-shirt and snacks. Learn about knot-tying, tackle crafting, casting, aquatic ecology, angler ethics and more! Open to 4-H members ages 8-13. Registration deadline is July 10.

www.canr.msu.edu/events/2026-saginaw-bay-4-h-fish-camp

July 23: Bug Day at the Children's Gardens

Michigan 4-H Children's Gardens, East Lansing

Join for a tribute to insects in the gardens. Collect, observe and even make bugs! The MSU Bug House will also be on site with their collections of insects from all over the world.

www.canr.msu.edu/events/bug-day

July 27: 4-H Garden Adventures Summer Camp

The Botanic Garden at Historic Barns Park, Traverse City

Youth ages 7-12- are invited to join this camp for fun adventures in nature, nurturing resilience, kindness, community and creativity as they explore sustainability and growth through an engaging, hands-on approach.

www.canr.msu.edu/events/4-h-garden-adventures-summer-camp-2026

July 30: Bubble Day at the Children's Gardens

Michigan 4-H Children's Gardens, East Lansing

Come celebrate summer vacation at the garden with bubbles! Youth will paint, eat and even make music with bubbles.

www.canr.msu.edu/events/bubble-day





STATEWIDE 4-H NEWS

Join the Michigan State Fair 4-H & Youth Virtual Showcase!

MSU Extension is thrilled to partner again in 2026 with the [Michigan State Fair](#) on an exciting program for Michigan youth: the Michigan State Fair 4-H & Youth Virtual Showcase. This statewide showcase provides a virtual platform for youth across Michigan to exhibit their work in all project areas and apply for up to \$1,000 in scholarships. Any Michigan youth ages 5-19 is encouraged to participate; 4-H membership is not required.

There is no cost to participate and youth may engage in as many classes as they wish by [submitting project photos and videos](#). **Be sure to submit your entries by the registration deadline of August 7 at 5 p.m.** Project evaluation will occur before the start of the Michigan State Fair so that winners can be announced at the event. Learn more, find helpful resources and registration links at www.canr.msu.edu/virtual-showcase/State-Fair-Virtual-Showcase/.



2026 MSF 4-H & Youth Showcase Business Pitch Contest

Got a business idea? Whether your business is already running, just getting started or still an idea, we want to hear your pitch! Enter the Michigan State Fair 4-H & Youth Virtual Showcase and share your entrepreneurial skills in a two-minute video!

Entries will be judged on creativity, communication, understanding of the target audience, and overall presentation skills. Winners in each age division will receive gift card prizes (\$75, \$50, \$25) sponsored by Michigan State University Federal Credit Union and be recognized through Michigan 4-H communications and social media. For more information, visit Department 73 of the fair book at www.canr.msu.edu/virtual-showcase/State-Fair-Virtual-Showcase/.

2026 MSF 4-H & Youth Showcase Michigan 4-H License Plate Promotion Contest

Michigan youth ages 8–19 are invited to enter the Michigan 4-H License Plate Promotion Contest as part of the Michigan State Fair 4-H & Youth Virtual Showcase! Create a short video and/or design a poster, flyer or graphic that encourages others to purchase the Michigan 4-H license plate and you could win. Prizes will be awarded and winners will be featured on Michigan 4-H social media channels. Put your creativity to work and help spread the word about 4-H across Michigan! For more information, visit Department 73 of the fair book at: www.canr.msu.edu/virtual-showcase/State-Fair-Virtual-Showcase/.

New scholarships for Michigan 4-H'ers!

The Michigan 4-H Foundation is pleased to offer new scholarship opportunities to Michigan 4-H members for fall 2026. Nearly \$30,000 in post-secondary 4-H scholarships are available for the 2026–2027 academic year to high school seniors or incoming college freshmen. Youth must have participated in 4-H for three or more years.

These scholarships are made possible through generous support from 4-H alumni, retirees and friends of 4-H. Apply by September 1 at mi4hfdtn.org/scholarship.

